

Acta Crystallographica Section E

Structure Reports

Online

ISSN 1600-5368

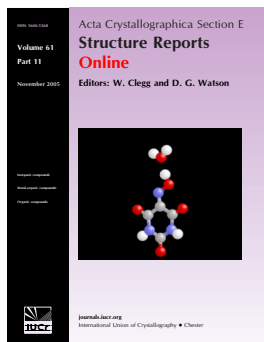
Editors: W.T.A. Harrison, J. Simpson and  
M. Weil

## *N'*-[(*E*)-4-Hydroxy-3-methoxybenzylidene]pyridine-4-carbohydrazide

Zahid Shafiq, Muhammad Yaqub, M. Nawaz Tahir, Abid Hussain and M. Saeed Iqbal

*Acta Cryst.* (2009). **E65**, o2899

This open-access article is distributed under the terms of the Creative Commons Attribution Licence <http://creativecommons.org/licenses/by/2.0/uk/legalcode>, which permits unrestricted use, distribution, and reproduction in any medium, provided the original authors and source are cited.



*Acta Crystallographica Section E: Structure Reports Online* is the IUCr's highly popular open-access structural journal. It provides a simple and easily accessible publication mechanism for the growing number of inorganic, metal-organic and organic crystal structure determinations. The electronic submission, validation, refereeing and publication facilities of the journal ensure very rapid and high-quality publication, whilst key indicators and validation reports provide measures of structural reliability. In 2007, the journal published over 5000 structures. The average publication time is less than one month.

Crystallography Journals **Online** is available from [journals.iucr.org](http://journals.iucr.org)

## *N'*-[(*E*)-4-Hydroxy-3-methoxybenzylidene]pyridine-4-carbohydrazide

Zahid Shafiq,<sup>a</sup> Muhammad Yaqub,<sup>b</sup> M. Nawaz Tahir,<sup>c\*</sup> Abid Hussain<sup>b</sup> and M. Saeed Iqbal<sup>d</sup>

<sup>a</sup>Department of Chemistry, Bahauddin Zakariya University, Multan-60800, Pakistan,

<sup>b</sup>Department of Chemistry, Bahauddin Zakariya University, Multan 60800, Pakistan,

<sup>c</sup>Department of Physics, University of Sargodha, Sargodha, Pakistan, and

<sup>d</sup>Department of Chemistry, Government College University, Lahore, Pakistan

Correspondence e-mail: dmntahir\_uos@yahoo.com

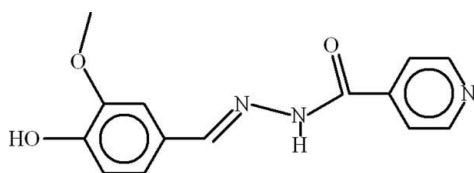
Received 23 October 2009; accepted 23 October 2009

Key indicators: single-crystal X-ray study;  $T = 296$  K; mean  $\sigma(\text{C}-\text{C}) = 0.003$  Å;  $R$  factor = 0.034;  $wR$  factor = 0.086; data-to-parameter ratio = 8.8.

In the title compound,  $\text{C}_{14}\text{H}_{13}\text{N}_3\text{O}_3$ , the two six-membered rings are oriented at a dihedral angle of  $15.17$  ( $11$ ) $^\circ$  and an intramolecular  $\text{O}-\text{H}\cdots\text{O}$  hydrogen bond occurs. In the crystal, molecules interact by way of  $\text{N}-\text{H}\cdots\text{O}$ ,  $\text{O}-\text{H}\cdots\text{N}$  and  $\text{C}-\text{H}\cdots\text{O}$  hydrogen bonds, thereby generating  $S(5)$  chain and  $R_2^1(7)$  ring motifs.

### Related literature

For related structures, see: Liu & Shi (2007); Shi *et al.* (2007); Shafiq *et al.* (2009). For graph-set theory, see: Bernstein *et al.* (1995).



### Experimental

#### Crystal data

$\text{C}_{14}\text{H}_{13}\text{N}_3\text{O}_3$

$M_r = 271.27$

Monoclinic,  $Cc$

$a = 14.8543$  ( $10$ ) Å

$b = 12.4943$  ( $9$ ) Å

$c = 7.7162$  ( $5$ ) Å

$\beta = 116.716$  ( $2$ ) $^\circ$

$V = 1279.20$  ( $15$ ) Å<sup>3</sup>

$Z = 4$

$\text{Mo K}\alpha$  radiation

$\mu = 0.10$  mm<sup>-1</sup>

$T = 296$  K

$0.32 \times 0.14 \times 0.10$  mm

#### Data collection

Bruker Kappa APEXII CCD

diffractometer

Absorption correction: multi-scan  
(*SADABS*; Bruker, 2005)

$T_{\min} = 0.973$ ,  $T_{\max} = 0.984$

7060 measured reflections

1613 independent reflections

1431 reflections with  $I > 2\sigma(I)$

$R_{\text{int}} = 0.028$

#### Refinement

$R[F^2 > 2\sigma(F^2)] = 0.034$

$wR(F^2) = 0.086$

$S = 1.04$

1613 reflections

183 parameters

2 restraints

H-atom parameters constrained

$\Delta\rho_{\text{max}} = 0.16$  e Å<sup>-3</sup>

$\Delta\rho_{\text{min}} = -0.21$  e Å<sup>-3</sup>

**Table 1**

Hydrogen-bond geometry (Å,  $^\circ$ ).

$D-\text{H}\cdots A$	$D-\text{H}$	$\text{H}\cdots A$	$D\cdots A$	$D-\text{H}\cdots A$
$\text{O}2-\text{H}2\text{B}\cdots\text{O}3$	0.82	2.25	2.694 (2)	114
$\text{N}2-\text{H}2\text{A}\cdots\text{O}1^{\text{ii}}$	0.86	2.25	3.089 (2)	164
$\text{O}2-\text{H}2\text{B}\cdots\text{N}1^{\text{ii}}$	0.82	1.96	2.703 (3)	150
$\text{C}5-\text{H}5\cdots\text{O}1^{\text{i}}$	0.93	2.55	3.410 (3)	153

Symmetry codes: (i)  $x, -y, z - \frac{1}{2}$ ; (ii)  $x + 1, -y, z + \frac{3}{2}$ .

Data collection: *APEX2* (Bruker, 2007); cell refinement: *SAINT* (Bruker, 2007); data reduction: *SAINT*; program(s) used to solve structure: *SHELXS97* (Sheldrick, 2008); program(s) used to refine structure: *SHELXL97* (Sheldrick, 2008); molecular graphics: *ORTEP-3 for Windows* (Farrugia, 1997) and *PLATON* (Spek, 2009); software used to prepare material for publication: *WinGX* (Farrugia, 1999) and *PLATON*.

AH gratefully acknowledges the Higher Education Commission, Islamabad, Pakistan, for providing him with a Scholaship under the Indigenous PhD Program (PIN 063-121531-PS3-127).

Supplementary data and figures for this paper are available from the IUCr electronic archives (Reference: HB5177).

### References

- Bernstein, J., Davis, R. E., Shimoni, L. & Chang, N.-L. (1995). *Angew. Chem. Int. Ed. Engl.* **34**, 1555-1573.
- Bruker (2005). *SADABS*. Bruker AXS Inc., Madison, Wisconsin, USA.
- Bruker (2007). *APEX2* and *SAINT*. Bruker AXS Inc., Madison, Wisconsin, USA.
- Farrugia, L. J. (1997). *J. Appl. Cryst.* **30**, 565.
- Farrugia, L. J. (1999). *J. Appl. Cryst.* **32**, 837-838.
- Liu, X. & Shi, X.-F. (2007). *Acta Cryst.* **E63**, o4807.
- Shafiq, Z., Yaqub, M., Tahir, M. N., Hussain, A. & Iqbal, M. S. (2009). *Acta Cryst.* **E65**, o2898.
- Sheldrick, G. M. (2008). *Acta Cryst.* **A64**, 112-122.
- Shi, X.-F., He, L., Ma, G.-Z. & Yuan, C.-C. (2007). *Acta Cryst.* **E63**, o1119-o1120.
- Spek, A. L. (2009). *Acta Cryst.* **D65**, 148-155.

**supplementary materials**

*Acta Cryst.* (2009). E65, o2899 [ doi:10.1107/S1600536809044134 ]

***N'*-[*E*]-4-Hydroxy-3-methoxybenzylidene]pyridine-4-carbohydrazide**

**Z. Shafiq, M. Yaqub, M. N. Tahir, A. Hussain and M. S. Iqbal**

**Comment**

We have reported the crystal structures of (II) *N'*-[*E*]-[4-Hydroxy-3-methoxyphenyl)methylidene]benzohydrazide (Shafiq *et al.*, 2009). The title compound (I, Fig. 1), has been prepared in continuation of synthesizing hydrazide derivatives.

The crystal structure of (III) *N'*-(4-Hydroxy-3-methoxybenzylidene)isonicotinohydrazide monohydrate (Shi *et al.*, 2007) and (IV) *N'*-(4-Hydroxy-3-methoxybenzylidene)isonicotinohydrazide methanol solvate (Liu & Shi, 2007) have also been reported. The title compound differs from (III) and (IV) as there is no solvate.

In the title compound the pyridine ring A (C1–C3/N1/C4/C5) and the benzene ring of vanilline B (C8–C13) are planar with a maximum r. m. s. deviations of 0.0061 and 0.0122 Å respectively, from their mean square planes. The dihedral angle between A/B is 15.17 (11)°. The intramolecular H-bonding of O—H···O type completes S(5) ring motif (Bernstein *et al.*, 1995). There also exist  $R_2^1(7)$  ring motif due to intermolecular H-bondings of C—H···O and N—H···O type (Table 1, Fig. 2). The molecules are stabilized in the form of two dimensional polymeric sheets owing to intermolecular H-bondings of O—H···N type (Fig. 2).

**Experimental**

To a hot stirred solution of isoniazid (1.37 g, 0.01 mol) in ethanol (15 ml) was added vanillin (1.52 g, 0.01 mol). The resultant mixture was then heated under reflux. After an hour precipitates were formed. The reaction mixture was further heated about 30 min for the completion of the reaction which was monitored through TLC. The reaction mixture was cooled to room temperature, filtered and washed with hot ethanol. Yellow needles of (I) were obtained by recrystallization of the crude product in 1,4-dioxan:ethanol (1:1) after two days.

**Refinement**

In the absence of significant anomalous dispersion effects, Friedel pairs were averaged before refinement.

The H-atoms were positioned geometrically (O–H = 0.82 Å, N–H = 0.86 Å, C–H = 0.93–0.96 Å) and refined as riding with  $U_{\text{iso}}(\text{H}) = 1.2U_{\text{eq}}(\text{carrier})$  or  $1.5U_{\text{eq}}(\text{methyl C})$ .

**Figures**

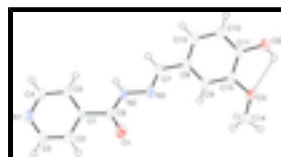


Fig. 1. View of (I) with displacement ellipsoids drawn at the 50% probability level. H-atoms are shown by spheres of arbitrary radius. The dotted line represent the intramolecular H-bondings.

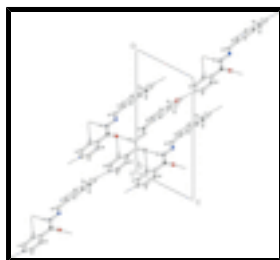


Fig. 2. The partial packing of (I), which shows that molecules form two dimensional polymeric chains.

## *N*'-[*(E)*-4-Hydroxy-3-methoxybenzylidene]pyridine-4-carbohydrazide

### Crystal data

$C_{14}H_{13}N_3O_3$

$M_r = 271.27$

Monoclinic, *Cc*

Hall symbol: *C* -2yc

$a = 14.8543$  (10) Å

$b = 12.4943$  (9) Å

$c = 7.7162$  (5) Å

$\beta = 116.716$  (2)°

$V = 1279.20$  (15) Å<sup>3</sup>

$Z = 4$

$F_{000} = 568$

$D_x = 1.409$  Mg m<sup>-3</sup>

Mo *K*α radiation,  $\lambda = 0.71073$  Å

Cell parameters from 1613 reflections

$\theta = 2.2$ – $28.7$ °

$\mu = 0.10$  mm<sup>-1</sup>

$T = 296$  K

Needle, yellow

$0.32 \times 0.14 \times 0.10$  mm

### Data collection

Bruker Kappa APEXII CCD  
diffractometer

Radiation source: fine-focus sealed tube

Monochromator: graphite

Detector resolution: 7.40 pixels mm<sup>-1</sup>

$T = 296$  K

$\omega$  scans

Absorption correction: multi-scan  
(SADABS; Bruker, 2005)

$T_{\min} = 0.973$ ,  $T_{\max} = 0.984$

7060 measured reflections

1613 independent reflections

1431 reflections with  $I > 2\sigma(I)$

$R_{\text{int}} = 0.028$

$\theta_{\text{max}} = 28.7$ °

$\theta_{\text{min}} = 2.2$ °

$h = -17 \rightarrow 19$

$k = -16 \rightarrow 16$

$l = -10 \rightarrow 5$

### Refinement

Refinement on  $F^2$

Least-squares matrix: full

$R[F^2 > 2\sigma(F^2)] = 0.034$

$wR(F^2) = 0.086$

$S = 1.04$

Secondary atom site location: difference Fourier map

Hydrogen site location: inferred from neighbouring sites

H-atom parameters constrained

$w = 1/[\sigma^2(F_o^2) + (0.0491P)^2 + 0.2451P]$

where  $P = (F_o^2 + 2F_c^2)/3$

$(\Delta/\sigma)_{\text{max}} < 0.001$

1613 reflections  $\Delta\rho_{\max} = 0.16 \text{ e \AA}^{-3}$   
 183 parameters  $\Delta\rho_{\min} = -0.21 \text{ e \AA}^{-3}$   
 2 restraints Extinction coefficient: ?  
 Primary atom site location: structure-invariant direct methods

*Special details*

**Geometry.** Bond distances, angles *etc.* have been calculated using the rounded fractional coordinates. All su's are estimated from the variances of the (full) variance-covariance matrix. The cell e.s.d.'s are taken into account in the estimation of distances, angles and torsion angles

**Refinement.** Refinement of  $F^2$  against ALL reflections. The weighted  $R$ -factor  $wR$  and goodness of fit  $S$  are based on  $F^2$ , conventional  $R$ -factors  $R$  are based on  $F$ , with  $F$  set to zero for negative  $F^2$ . The threshold expression of  $F^2 > \sigma(F^2)$  is used only for calculating  $R$ -factors(gt) *etc.* and is not relevant to the choice of reflections for refinement.  $R$ -factors based on  $F^2$  are statistically about twice as large as those based on  $F$ , and  $R$ -factors based on ALL data will be even larger.

*Fractional atomic coordinates and isotropic or equivalent isotropic displacement parameters ( $\text{\AA}^2$ )*

	<i>x</i>	<i>y</i>	<i>z</i>	$U_{\text{iso}}^*/U_{\text{eq}}$
O1	0.20978 (12)	-0.14131 (15)	0.1499 (2)	0.0464 (5)
O2	0.74733 (14)	0.23723 (14)	0.7114 (3)	0.0495 (5)
O3	0.71022 (13)	0.02563 (13)	0.6995 (3)	0.0462 (5)
N1	-0.10456 (14)	-0.14377 (17)	-0.4734 (3)	0.0415 (6)
N2	0.24963 (13)	-0.01999 (16)	-0.0200 (2)	0.0357 (5)
N3	0.34327 (13)	-0.00082 (17)	0.1376 (3)	0.0371 (5)
C1	0.08684 (14)	-0.10723 (18)	-0.1727 (3)	0.0302 (6)
C2	0.03464 (17)	-0.2001 (2)	-0.1794 (3)	0.0400 (7)
C3	-0.06004 (17)	-0.2154 (2)	-0.3320 (4)	0.0455 (8)
C4	-0.05475 (16)	-0.0540 (2)	-0.4634 (3)	0.0387 (6)
C5	0.04083 (16)	-0.03215 (18)	-0.3174 (3)	0.0342 (6)
C6	0.18841 (15)	-0.09215 (18)	-0.0012 (3)	0.0317 (6)
C7	0.38334 (15)	0.08629 (19)	0.1254 (3)	0.0355 (6)
C8	0.48092 (15)	0.12099 (18)	0.2766 (3)	0.0322 (6)
C9	0.54708 (16)	0.05029 (18)	0.4162 (3)	0.0338 (6)
C10	0.63784 (15)	0.08723 (18)	0.5602 (3)	0.0320 (6)
C11	0.66190 (15)	0.19614 (18)	0.5701 (3)	0.0318 (6)
C12	0.59690 (16)	0.26504 (19)	0.4295 (3)	0.0353 (6)
C13	0.50728 (15)	0.22751 (19)	0.2826 (3)	0.0360 (6)
C14	0.70271 (18)	-0.08742 (19)	0.6725 (4)	0.0424 (7)
H2	0.06282	-0.25144	-0.08249	0.0480*
H2A	0.23175	0.01414	-0.12720	0.0428*
H2B	0.77967	0.18945	0.78640	0.0594*
H3	-0.09420	-0.27850	-0.33636	0.0546*
H4	-0.08569	-0.00289	-0.55979	0.0465*
H5	0.07325	0.03162	-0.31695	0.0411*
H7	0.34970	0.12947	0.01696	0.0425*
H9	0.53013	-0.02163	0.41231	0.0405*

## supplementary materials

---

H12	0.61341	0.33710	0.43342	0.0424*
H13	0.46457	0.27431	0.18744	0.0432*
H14A	0.70409	-0.10498	0.55254	0.0636*
H14B	0.64062	-0.11205	0.66859	0.0636*
H14C	0.75836	-0.12140	0.77800	0.0636*

### Atomic displacement parameters ( $\text{\AA}^2$ )

	$U^{11}$	$U^{22}$	$U^{33}$	$U^{12}$	$U^{13}$	$U^{23}$
O1	0.0372 (9)	0.0570 (11)	0.0298 (8)	-0.0070 (8)	0.0015 (7)	0.0075 (7)
O2	0.0341 (8)	0.0373 (9)	0.0468 (9)	-0.0080 (7)	-0.0086 (7)	0.0022 (8)
O3	0.0347 (8)	0.0346 (9)	0.0433 (9)	-0.0031 (7)	-0.0056 (7)	0.0066 (7)
N1	0.0238 (8)	0.0486 (12)	0.0369 (10)	-0.0013 (8)	0.0001 (7)	-0.0017 (8)
N2	0.0252 (9)	0.0448 (11)	0.0234 (8)	-0.0053 (8)	-0.0013 (7)	0.0011 (7)
N3	0.0233 (8)	0.0481 (11)	0.0253 (8)	-0.0042 (8)	-0.0021 (7)	-0.0012 (8)
C1	0.0226 (9)	0.0371 (11)	0.0235 (9)	-0.0011 (8)	0.0037 (8)	-0.0041 (8)
C2	0.0317 (12)	0.0392 (12)	0.0366 (11)	-0.0011 (9)	0.0042 (10)	0.0068 (10)
C3	0.0302 (12)	0.0441 (14)	0.0484 (13)	-0.0087 (10)	0.0054 (10)	0.0025 (11)
C4	0.0258 (10)	0.0455 (13)	0.0316 (10)	0.0017 (9)	0.0011 (8)	0.0037 (9)
C5	0.0260 (10)	0.0387 (12)	0.0295 (10)	-0.0028 (9)	0.0050 (8)	-0.0021 (9)
C6	0.0242 (9)	0.0376 (12)	0.0240 (9)	0.0021 (8)	0.0027 (8)	-0.0028 (8)
C7	0.0257 (10)	0.0421 (12)	0.0281 (10)	-0.0004 (9)	0.0028 (8)	0.0005 (9)
C8	0.0230 (9)	0.0403 (12)	0.0269 (9)	-0.0028 (9)	0.0055 (8)	-0.0015 (9)
C9	0.0280 (10)	0.0311 (11)	0.0327 (10)	-0.0059 (8)	0.0052 (8)	0.0006 (8)
C10	0.0258 (9)	0.0326 (11)	0.0291 (9)	-0.0010 (8)	0.0048 (8)	0.0027 (8)
C11	0.0242 (9)	0.0343 (11)	0.0296 (10)	-0.0037 (8)	0.0055 (8)	-0.0018 (8)
C12	0.0323 (11)	0.0304 (11)	0.0358 (11)	-0.0033 (9)	0.0087 (9)	-0.0007 (9)
C13	0.0295 (11)	0.0387 (12)	0.0305 (10)	0.0035 (9)	0.0053 (9)	0.0039 (9)
C14	0.0352 (12)	0.0342 (12)	0.0485 (13)	0.0013 (10)	0.0105 (10)	0.0065 (10)

### Geometric parameters ( $\text{\AA}$ , $^\circ$ )

O1—C6	1.227 (3)	C8—C13	1.382 (3)
O2—C11	1.349 (3)	C8—C9	1.398 (3)
O3—C10	1.366 (3)	C9—C10	1.385 (3)
O3—C14	1.425 (3)	C10—C11	1.400 (3)
O2—H2B	0.8200	C11—C12	1.382 (3)
N1—C3	1.334 (3)	C12—C13	1.386 (3)
N1—C4	1.327 (3)	C2—H2	0.9300
N2—C6	1.334 (3)	C3—H3	0.9300
N2—N3	1.396 (3)	C4—H4	0.9300
N3—C7	1.264 (3)	C5—H5	0.9300
N2—H2A	0.8600	C7—H7	0.9300
C1—C5	1.381 (3)	C9—H9	0.9300
C1—C2	1.384 (3)	C12—H12	0.9300
C1—C6	1.506 (3)	C13—H13	0.9300
C2—C3	1.383 (4)	C14—H14A	0.9600
C4—C5	1.386 (3)	C14—H14B	0.9600
C7—C8	1.459 (3)	C14—H14C	0.9600

C10—O3—C14	117.5 (2)	O2—C11—C10	122.6 (2)
C11—O2—H2B	109.00	C10—C11—C12	119.5 (2)
C3—N1—C4	117.5 (2)	C11—C12—C13	120.5 (2)
N3—N2—C6	118.82 (17)	C8—C13—C12	120.5 (2)
N2—N3—C7	113.6 (2)	C1—C2—H2	120.00
C6—N2—H2A	121.00	C3—C2—H2	120.00
N3—N2—H2A	121.00	N1—C3—H3	119.00
C2—C1—C5	118.3 (2)	C2—C3—H3	119.00
C2—C1—C6	117.45 (19)	N1—C4—H4	118.00
C5—C1—C6	124.2 (2)	C5—C4—H4	118.00
C1—C2—C3	119.1 (2)	C1—C5—H5	121.00
N1—C3—C2	123.0 (2)	C4—C5—H5	121.00
N1—C4—C5	123.7 (2)	N3—C7—H7	119.00
C1—C5—C4	118.5 (2)	C8—C7—H7	119.00
O1—C6—N2	123.0 (2)	C8—C9—H9	120.00
N2—C6—C1	116.85 (18)	C10—C9—H9	120.00
O1—C6—C1	120.1 (2)	C11—C12—H12	120.00
N3—C7—C8	121.9 (2)	C13—C12—H12	120.00
C7—C8—C13	118.5 (2)	C8—C13—H13	120.00
C7—C8—C9	122.0 (2)	C12—C13—H13	120.00
C9—C8—C13	119.5 (2)	O3—C14—H14A	109.00
C8—C9—C10	120.1 (2)	O3—C14—H14B	109.00
O3—C10—C9	125.6 (2)	O3—C14—H14C	109.00
O3—C10—C11	114.4 (2)	H14A—C14—H14B	109.00
C9—C10—C11	120.0 (2)	H14A—C14—H14C	109.00
O2—C11—C12	118.0 (2)	H14B—C14—H14C	110.00
C14—O3—C10—C9	14.0 (4)	N1—C4—C5—C1	-0.7 (4)
C14—O3—C10—C11	-165.5 (2)	N3—C7—C8—C9	16.8 (4)
C4—N1—C3—C2	-0.6 (4)	N3—C7—C8—C13	-162.1 (2)
C3—N1—C4—C5	1.3 (4)	C7—C8—C9—C10	-178.3 (2)
C6—N2—N3—C7	-162.0 (2)	C13—C8—C9—C10	0.6 (4)
N3—N2—C6—O1	1.4 (3)	C7—C8—C13—C12	176.7 (2)
N3—N2—C6—C1	177.92 (19)	C9—C8—C13—C12	-2.3 (4)
N2—N3—C7—C8	179.5 (2)	C8—C9—C10—O3	-177.3 (2)
C5—C1—C2—C3	1.5 (4)	C8—C9—C10—C11	2.2 (4)
C6—C1—C2—C3	178.3 (2)	O3—C10—C11—O2	-3.1 (3)
C2—C1—C5—C4	-0.8 (3)	O3—C10—C11—C12	176.2 (2)
C6—C1—C5—C4	-177.4 (2)	C9—C10—C11—O2	177.4 (2)
C2—C1—C6—O1	-21.5 (3)	C9—C10—C11—C12	-3.4 (4)
C2—C1—C6—N2	161.9 (2)	O2—C11—C12—C13	-179.0 (2)
C5—C1—C6—O1	155.1 (2)	C10—C11—C12—C13	1.7 (4)
C5—C1—C6—N2	-21.5 (3)	C11—C12—C13—C8	1.1 (4)
C1—C2—C3—N1	-0.8 (4)		

Hydrogen-bond geometry (Å, °)

<i>D</i> —H $\cdots$ <i>A</i>	<i>D</i> —H	H $\cdots$ <i>A</i>	<i>D</i> $\cdots$ <i>A</i>	<i>D</i> —H $\cdots$ <i>A</i>
O2—H2B $\cdots$ O3	0.82	2.25	2.694 (2)	114



## supplementary materials

---

N2—H2A···O1 <sup>i</sup>	0.86	2.25	3.089 (2)	164
O2—H2B···N1 <sup>ii</sup>	0.82	1.96	2.703 (3)	150
C5—H5···O1 <sup>i</sup>	0.93	2.55	3.410 (3)	153

Symmetry codes: (i)  $x, -y, z-1/2$ ; (ii)  $x+1, -y, z+3/2$ .

Fig. 1

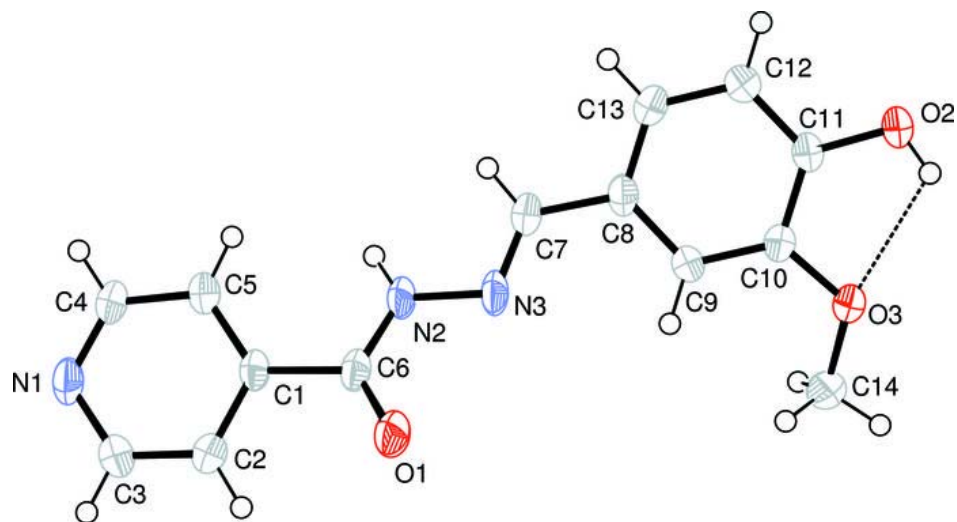


Fig. 2

