



## Analytical Methods

# Thermal analysis of some natural polysaccharide materials by isoconversional method

Mohammad S. Iqbal<sup>a,\*</sup>, Shazma Massey<sup>a,b</sup>, Jamshed Akbar<sup>c</sup>, Chaudhary M. Ashraf<sup>a</sup>, Rashid Masih<sup>a</sup>

<sup>a</sup> Department of Chemistry, Forman Christian College, Lahore 54600, Pakistan

<sup>b</sup> Department of Chemistry, GC University, Lahore 54000, Pakistan

<sup>c</sup> Department of Chemistry, University of Sargodha, Sargodha 40100, Pakistan

## ARTICLE INFO

## Article history:

Received 20 February 2012

Received in revised form 15 September 2012

Accepted 10 February 2013

Available online 21 February 2013

## Keywords:

Carbohydrates

Polysaccharides

Isoconversional thermal analysis

Thermogravimetry

Thermal stability

## ABSTRACT

Isoconversional thermal analysis of some important polysaccharides from functional foods is reported. Various thermal parameters including apparent activation energy ( $E_a$ ), pre-exponential factor ( $A$ ) were worked out, and the fitness of data to different models describing the degradation kinetics of polysaccharides was studied. The polysaccharides from *Mimosa pudica* (MP), *Plantago ovata* (PO), *Argyrea speciosa* (AS), *Acacia nilotica* (AN), *P. ovata* husk (HK) and *Acacia modesta* (AM) exhibited multistep degradation while those from *Astragalus gummifer* (AG), *Salvia aegyptiaca* (SA) and *Ocimum basicilicum* (OB) degraded mainly in single step. Generally, the degradation was exothermic. The average  $E_a$  values as determined by Flynn–Wall–Ozawa method were found to be in the range 132–187 kJ mol<sup>-1</sup>. The mean comprehensive index of thermal stability (ITS) fell in the range 0.33–0.43. All the materials under investigation except those from SA and AS appear to be as stable as some of the important commercial materials used as pharmaceutical ingredients. Model-fitting analysis revealed that the major degradation step follows first-order kinetics.

© 2013 Elsevier Ltd. All rights reserved.

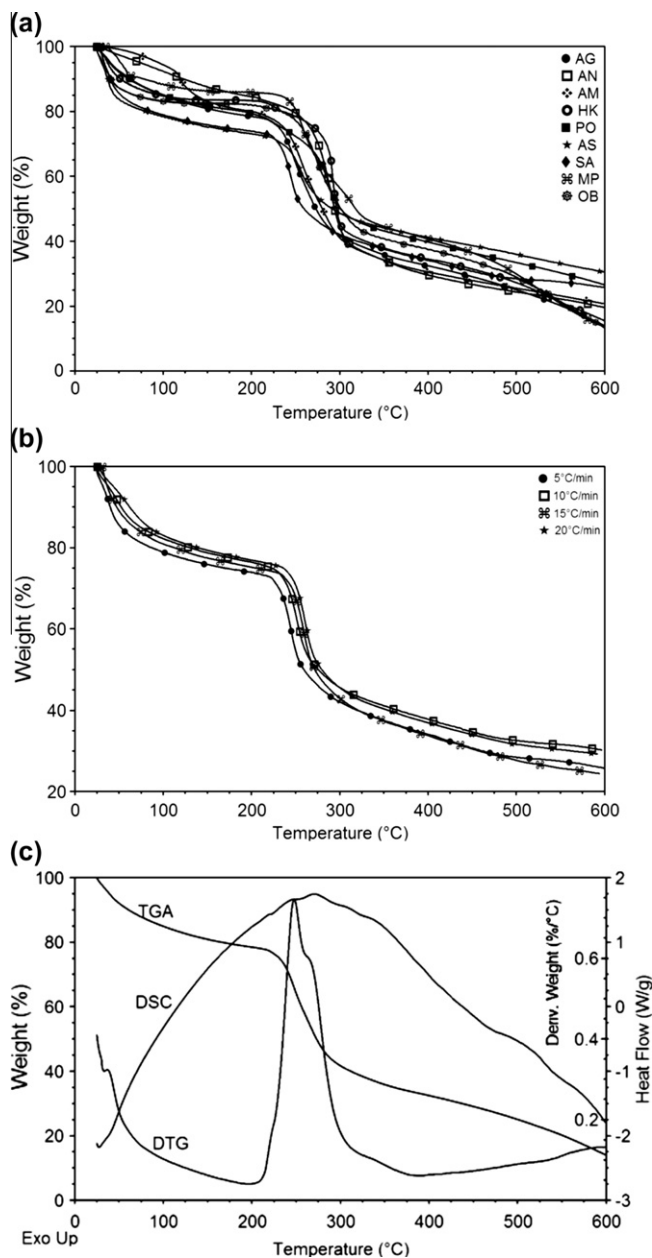
## 1. Introduction

A large number of gums and mucilages of edible plant items are natural hydrogels with excellent water holding capacity. They are being used as functional foods, food additives and herbal medicine since long (Duke, 2002; Morton, 1990). Some of them have been used as materials for tissue engineering, food technology, pharmaceutical excipients and drug carriers (Hoffman, 2002; Iqbal, Akbar, Hussain, Saghir, & Sher, 2011; Lee & Mooney, 2001; Lin & Metters, 2006; Munarin, Petrini, Farè, & Tanzi, 2010; Niño-Medina et al., 2010; Peppas, Bures, Leobandung, & Ichikawa, 2000). These materials are becoming more and more popular because of being safe, biodegradable and biocompatible. The increasing importance of these materials has motivated the scientists to study their physical and chemical properties in order to find their property-based applications. For most of the applications it is important to know thermal stability of a material to be used. Thermal stability, moisture content, glass transition temperature and other thermodynamic parameters can conveniently be determined by use of thermogravimetric analysis (TGA) and differential scanning calorimetry (DSC) (Iqbal et al., 2011; Zohuriaan & Shokrolahi, 2004).

\* Corresponding author. Tel.: +92 300 4262813.

E-mail addresses: [saeediq50@hotmail.com](mailto:saeediq50@hotmail.com), [saeediqbal@fccollege.edu.pk](mailto:saeediqbal@fccollege.edu.pk) (M.S. Iqbal).

In the present work we are reporting isoconversional thermal analysis of polysaccharide materials isolated from *Plantago ovata* (PO), *P. ovata* husk (HK), *Salvia aegyptiaca* (SA), *Ocimum basicilicum* (OB), *Mimosa pudica* (MP), *Acacia modesta* (AM), *Argyrea speciosa* (AS), *Acacia nilotica* (AN) and *Astragalus gummifer* (AG). These materials are widely being used in food and pharmaceutical preparations as thickener, stabilizer, emulsifier etc. The gels from PO, AG and AN are also approved (US-FDA) pharmaceutical additives. Seeds of OB and SA are used in folk medicines and in some parts of Asia these are added in ice desserts (regionally known as 'Falooh-dah') and beverages. They are source of dietary fibre (Al-Yousuf, Bashir, Ali, Tanira, & Blunden, 2002; Gorai, Gasmi, & Neffati, 2011; Hosseini-Parvar, Matia-Merino, Goh, Razavi, & Mortazavi, 2010). The gum extracted from OB has sheer-thinning properties and has been suggested for use as a functional additive in food products (Hosseini-Parvar et al., 2010). The gum from AM is used for various ailments and its suspension in water, locally called as 'Zhuble sharbat', is used as a health tonic (Ahmad et al., 2011). The AS gel has also been suggested for use in pharmaceutical preparations (Singh et al., 2010). The gels from PO and MP have recently been evaluated as drug carriers for sustained drug delivery (Ahuja, Kumar, & Yadav, 2010; Akbar, Iqbal, Chaudhary, Yasin, & Massey, in press; Iqbal et al., 2011; Singh, Kumar, Langyan, & Ahuja, 2009). Chemical composition of most of these materials has been reported by several workers (Azuma & Sakamoto, 2003; Chalk, Stoddart, Szarek, & Jones, 1968; Chatterjee & Mukherjee, 1958; Farooqi,



**Fig. 1.** (a) TGA curves of polysaccharides under study at heating rate of 5 °C min<sup>-1</sup>. MP: *Mimosa pudica*; PO: *Plantago ovate*; AS: *Argyrea speciosa*; AN: *Acacia nilotica*; HK: *Plantago ovata* husk; AM: *Acacia modesta*; AG: *Astragalus gummifer*; SA: *Salvia aegyptiaca*; OB: *Ocimum basicilicum*. (b) TGA curves of SA at different heating rates (c) Representative TGA, DTG and DSC curves for SA at heating rate of 5 °C min<sup>-1</sup>.

**Table 1**  
Thermal and compensation effect parameters for polysaccharides<sup>a</sup>.

Sample code	Compensation equation parameters			$E_a$ (kJ mol <sup>-1</sup> )	lnA	IPDT (°C)	ITS	$\Delta H^*$	$\Delta S^*$	$\Delta G^*$
	$a$	$b$	$ r $							
AG	-2.410	0.222	0.999	187.0	43.8	241	0.38	182.7	114.6	122.9
AN	-2.203	0.214	0.999	157.5	35.8	254	0.40	152.8	47.4	126.1
AS	-2.395	0.219	0.999	157.6	36.9	226	0.35	153.2	57.1	123.0
AM	-2.414	0.218	0.999	132.6	31.3	269	0.42	128.1	10.4	122.5
MP	-2.199	0.208	0.998	165.0	36.6	270	0.43	160.6	54.6	131.6
OB	-2.444	0.213	0.999	164.7	37.6	261	0.41	160.2	62.7	126.0
PO	-2.414	0.212	0.999	154.9	35.2	247	0.39	150.2	42.5	126.4
SA	-2.343	0.223	0.999	169.6	40.2	213	0.33	165.3	84.7	121.4
HK	-1.437	0.212	0.999	175.4	38.7	262	0.41	170.7	71.5	130.2

<sup>a</sup> Mean  $E_a$ , IPDT and ITS values are reported from different heating rates up to 600 °C. lnA is calculated from mean  $E_a$ .

Kapoor, & Khan, 1977; Fischer et al., 2004; Saghir, Iqbal, Hussain, Koschella, & Heinze, 2008; Seigler, 2003; Tharanathan & Anjaneyalu, 1972; Tharanathan & Anjaneyalu, 1975; Tischer, Iacomini, & Gorin, 2002). As far as their thermal studies at multiple heating rates are concerned there appears to be no such reports available in literature, however, a few of them have been studied by use of single-heating rate methods. It is now well established that the single-heating rate methods do not provide accurate information regarding kinetic parameters (Vyazovkin, 2006; Vyazovkin et al., 2011). In this work we have used model-free and model-fitting approaches in order to determine the so-called 'kinetic triplet' consisting of  $E_a$ , A and the functional form ( $g(\alpha)$ ) of the model that describes the thermal degradation pattern of gels.

## 2. Materials and methods

### 2.1. Materials

The materials used in this study were: PO husk and seeds; seeds of SA, OB and MP; gums of AG, AM, AN and AS; acetone; acetic acid; methanol. The plant materials were obtained from local market and the chemicals were from E. Merck, Germany. The chemicals were used without further purification. Double-distilled water was used throughout this study.

### 2.2. Isolation of polysaccharides

The polysaccharides from PO seeds (Iqbal et al., 2011) and husk (Saghir et al., 2008) were isolated by use of reported methods. For isolation of gels from seeds of OB, SA and MP the reported methods (Iqbal et al., 2011) were used with slight modifications as follows. The seeds (15 g) were washed with distilled water (50 cm<sup>3</sup>) and transferred to a 2-L beaker containing distilled water (500 cm<sup>3</sup>). They were allowed to swell overnight and then blended with blunt blades using kitchen blender. The polysaccharide was separated out by vacuum filtration through muslin cloth and air-dried at room temperature (30 ± 3 °C) to a constant weight. The gel from AS was better isolated as above by omitting the blending step. The isolated AM and AN gels were obtained from local market and were purified by dissolving them (20 g) in distilled water (150 cm<sup>3</sup>), centrifugation and filtering out the insoluble material followed by air-drying the resulting polysaccharide to a constant weight. The AG gel, obtained from the local market, was freed from extraneous matter by suspending it in distilled water for about 2 h followed by removal of clear gel with the help of a stainless steel spatula and drying in an oven at 35 ± 1 °C overnight.

### 2.3. Thermal analysis

TGA and DSC analysis were carried out with a simultaneous thermal analyzer SDT, Q-600 (TA instruments, USA), under

nitrogen atmosphere at a flow rate of  $100 \text{ cm}^3 \text{ min}^{-1}$  using 3.0–10.0 mg of the sample. The data were obtained at four different heating rates, i.e., 5, 10, 15 and  $20 \text{ }^\circ\text{C min}^{-1}$  from ambient to  $600 \text{ }^\circ\text{C}$ . The data were analysed by the isoconversational Flynn–Wall–Ozawa (FWO) method (Eq. (1)).

$$\ln \beta = \ln \frac{AE_a}{Rg(\alpha)} - 5.331 - 1.052 \frac{E_a}{RT} \quad (1)$$

where  $g(\alpha) = \int_0^\alpha \frac{d\alpha}{f(\alpha)}$ ;  $\beta$  the heating rate;  $A$  the pre-exponential factor;  $R$  the general gas constant and  $T$  is the temperature at the conversion  $\alpha$ . The FWO method was the first isoconversational linear integral method developed by Flynn and Wall (1966) and Ozawa (1965). This method is based on the assumption that for a fixed extent of conversion, the reaction rate depends upon temperature only. Thus it eliminates the dependence of reaction kinetics on any model, that may be represented by an integral form  $g(\alpha)$ . Therefore, this may be termed as a model-free approach. This method uses data obtained at different heating rates, thus at fixed  $\alpha$ , the plot of  $\log \beta$  vs  $1/T$  will be a straight line, the slope of which permits the calculation of  $E_a$ . The  $\alpha$  is defined as  $(w_o - w_t)/(w_o - w_f)$ , where  $w_t$  is the weight of the sample at any temperature  $T$ ,  $w_o$  the initial weight and  $w_f$  is the final weight at the temperature at which the mass loss is approximately negligible.

Thermal stabilities of the polysaccharides were determined by integral procedural decomposition temperature (IPDT) and comprehensive index of intrinsic thermal stability (ITS) by Doyle (1961). This method is considered to be most appropriate and reliable to determine these parameters because it takes into account the whole TGA curve by measuring area under it. The ITS and IPDT values were determined from TGA of all four heating rates and mean values are reported for each polysaccharide. The life-times of polysaccharides were also predicted by model-free approach based on Eq. (2). The model-free approach eliminates the limitations of other methods such as ASTM E1641 and E698 methods which assume that the  $E_a$  remains constant throughout the degradation step. Therefore, in cases where  $E_a$  is not constant in a step the model-free approach is more appropriate (Vyazovkin et al., 2011).

$$t_\alpha = \frac{\int_0^{T_\alpha} \exp\left(-\frac{E_a}{RT}\right) dT}{\beta \exp\left(-\frac{E_a}{RT_0}\right)} \quad (2)$$

This relationship exploits the variation of activation energy with  $\alpha$ . The integral in the numerator has no analytical solution, however, it can be evaluated by different approximations. In this study we used the Senum–Yang fourth degree approximation.

The data were analysed by the use of Universal Analysis 2000 software, version 4.2E (TA Instruments, USA), and MS Excel® 2010. Hierarchical cluster analysis (HCA) was performed to classify the materials with similar thermal properties by use of Statistica 8 and dendrogram were drawn using weighted pair-group average and Euclidean distance.

### 3. Results and discussion

The isolated polysaccharides were white, off-white or light brown in colour. They showed good swelling in water. The protein content as determined by use of BCA Protein Assay Kit (Pierce, Thermo Scientific) was found to be in the range 0.01–0.5% which may be considered to have negligible effect on thermal properties. Thermal behaviour of the isolated polysaccharides was studied by TGA and DSC from ambient to  $600 \text{ }^\circ\text{C}$ . In TGA they exhibited an endothermic weight loss of 8–20% in the  $80\text{--}120 \text{ }^\circ\text{C}$  range, which was due to the loss of trapped water (Iqbal et al., 2011; Peng & Wu, 2010; Popescu, Popescu, Lisa, & Sakata, 2011; Yang, Yan, Chen, Lee, & Zheng, 2007). The major weight loss (18–36%) occurred in

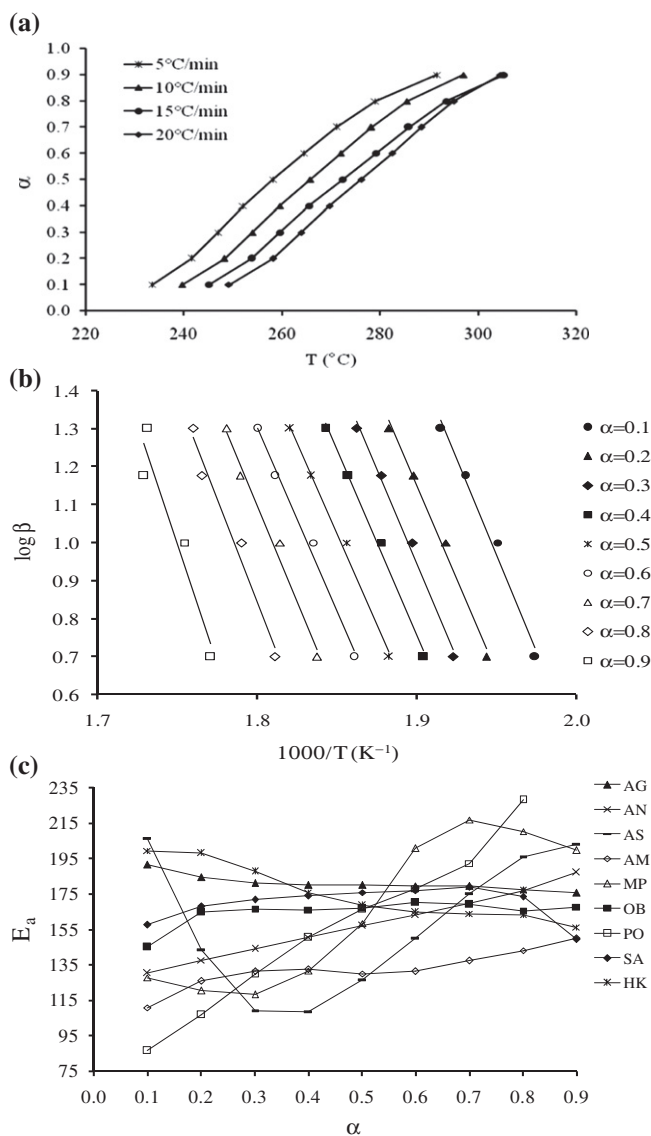


Fig. 2. (a) Representative  $\alpha$ - $T$  curve for AG (b) Representative FWO plot for AG to calculate  $E_a$ . (c) Dependence of  $E_a$  on  $\alpha$  for polysaccharides.

the range  $225\text{--}325 \text{ }^\circ\text{C}$  (Fig. 1a), which was due to major degradation of the polysaccharide structure. This step was associated with a wide exothermic enthalpy change as shown in the DSC scan (Fig. 1c). The mean ITS and IPDT values were found to be in the range 0.33–0.43 and  $213\text{--}270 \text{ }^\circ\text{C}$ , respectively (Table 1), which are indicative of good thermal stability of the materials. The isolated polysaccharides could be classified on the basis of their thermal behaviour (HCA) as shown in Fig. 3. It can be seen that SA and AS polysaccharides with ITS values 0.35 and 0.33, respectively, are on the lower side and they appear to form one major group while others form the second major group containing small groups at various similarity levels. As the IPDT and ITS are calculated from the area under the TGA curve, the SA and AS depicted lower values due to higher moisture contents (SA = 20%, AS = 21%) in them (Fig. 1a).

#### 3.1. Flynn–Wall–Ozawa analysis

The apparent  $E_a$  values for major stage of decomposition were calculated by FWO method at different conversions ( $\alpha = 0.1\text{--}0.90$  with 0.1 increment). Typical  $\alpha$ - $T$  and FWO plots for AG are shown in Fig. 2a and b respectively. The  $E_a$ - $\alpha$  curves

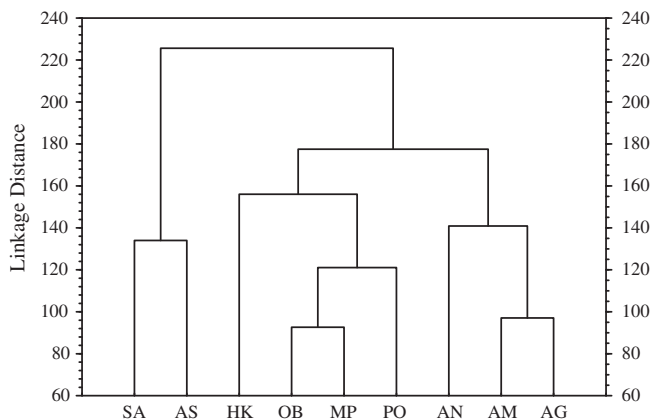


Fig. 3. Thermal classification of polysaccharides: Dendrogram showing similarity levels of thermograms for polysaccharides.

(Fig. 2c) indicated the dependence of  $E_a$  on the degree of conversion  $\alpha$ . The polysaccharides from MP, AS and PO showed strong dependence of  $E_a$  on  $\alpha$  suggesting a multistep degradation pattern for these materials. The  $E_a$  value of OB, SA and AG remains almost constant in the region  $\alpha \geq 0.2$  indicating that these polysaccharides may be decomposed in one step. The  $E_a$  for HK, AN and AM varies with  $\alpha$ , which suggests a multistep degradation of these materials (Vyazovkin, 2006; Vyazovkin et al., 2011). The multistep decomposition may be attributed to the diversity of sugar content of the material. The average activation energies are given in Table 1.

Since FWO method does not provide a direct estimate of the pre-exponential factor  $A$ , this factor was calculated by use of the compensation effect relationship (Vyazovkin, 2006; Vyazovkin et al., 2011) defined by Eq. (3).

$$\ln A = a + bE_a \quad (3)$$

where  $a$  and  $b$  are the compensation parameters. This relation suggests that any change in  $\ln A$  shall be accompanied by a corresponding change, in a linear fashion, in  $E_a$  as calculated by use of Eq. (4). The  $a$  and  $b$  were determined by model-fitting approach using Coats–Redfern Eq.

$$\ln \frac{g(\alpha)}{T^2} = \ln \left[ \left( \frac{AR}{\beta E_a} \right) \left( 1 - \frac{2RT}{E_a} \right) \right] - \frac{E_a}{RT} \quad (4)$$

where  $\bar{T}$  is the average experimental temperature. The compensation parameters ( $a$  and  $b$ ) and  $E_a$  (from FWO method) were put in the Eq. (3) to give  $A$ . The  $g(\alpha)$  models used for solving the Eq. (4) in the present work are listed in Table 2. By use of this equation plots of  $\ln(g(\alpha)/T^2)$  vs  $1/T$  yield a set of kinetic parameters,  $A$  and  $E_a$ ; thus, according to Eq. (3) the values of  $a$  and  $b$  were obtained. The  $\ln A$  values calculated from this equation using average FWO activation energies are listed in Table 1. The best model was selected on the basis of (i) the correlation coefficient (ii) the closeness of the activation energy with that determined by FWO method. Thus the first order (F1) was found to be the best of the ten for most of the polysaccharides. The AN, AS, AM, MP, PO and HK polysaccharides exhibited a multistep decomposition with first order kinetics for the rate-determining step, whereas OB, SA and AG showed single step decompositions. This finding supports the general practice of using Broido method for determination of kinetic parameters of polysaccharides where the reaction mechanism is assumed to be of first order. In case of HK the data also fits well in A2 model and for others the diffusion models, D1 and D3, also showed good fits (Table 2). All the polysaccharides under investigation exhibited very high stability (life time > 20 years) at 40 °C, except PO and AM (life time about 1 month), as predicted by the model-free analysis

Table 2 Kinetic parameters for polysaccharides determined by model-fitting approach using Coats–Redfern equation<sup>a</sup>.

Reaction model	Code	g(α)	AG			AN			AS			AM			MP			OB			PO			SA			HK		
			Ea	lnA	r	Ea	lnA	r	Ea	lnA	r	Ea	lnA	r	Ea	lnA	r	Ea	lnA	r	Ea	lnA	r	Ea	lnA	r	Ea	lnA	r
Power law	P1	$\alpha^{1/4}$	13	0.23	0.849	26	2.83	0.977	11	0.13	0.782	12	0.12	0.898	8	0.60	0.718	14	0.34	0.873	17	0.79	0.888	11	0.19	0.669	72	13.31	0.984
Power law	P2	$\alpha^{1/3}$	20	1.63	0.885	38	5.50	0.981	18	1.15	0.834	18	1.22	0.926	14	0.22	0.800	22	1.91	0.902	26	2.67	0.911	17	1.01	0.738	99	19.30	0.985
Power law	P3	$\alpha^{1/2}$	34	4.99	0.910	61	10.78	0.984	32	4.24	0.871	32	4.35	0.944	25	2.56	0.853	38	5.44	0.923	43	6.59	0.928	30	4.01	0.790	154	31.14	0.986
Power law	P4	$\alpha^{3/2}$	121	24.65	0.932	202	41.35	0.987	113	22.56	0.905	114	22.84	0.960	95	17.76	0.898	132	26.03	0.942	148	29.34	0.944	107	21.88	0.840	480	100.85	0.987
One-dimensional diffusion	D1	$\alpha^2$	164	34.25	0.935	273	56.38	0.987	153	31.49	0.908	155	31.85	0.962	129	25.16	0.903	179	36.08	0.944	201	40.48	0.946	146	30.59	0.845	643	135.45	0.987
First order	F1	$-\ln(1-\alpha)$	114	24.00	<b>0.977</b>	186	38.64	<b>0.999</b>	108	22.28	<b>0.959</b>	107	21.92	<b>0.991</b>	90	17.65	<b>0.953</b>	124	25.19	<b>0.982</b>	139	28.23	<b>0.980</b>	105	22.19	<b>0.911</b>	440	93.08	<b>0.993</b>
Avrami–Erofeev	A1	$[-\ln(1-\alpha)]^{1/4}$	22	2.28	0.960	40	6.10	0.999	20	1.83	0.928	20	1.75	0.984	16	0.71	0.907	24	2.56	0.970	28	3.34	0.968	20	1.81	0.853	103	20.27	0.992
Avrami–Erofeev	A2	$[-\ln(1-\alpha)]^{1/3}$	32	4.75	0.967	56	9.83	0.999	30	4.13	0.941	30	4.02	0.987	24	2.51	0.927	35	5.14	0.975	40	6.19	0.973	29	4.11	0.877	140	28.49	<b>0.992</b>
Avrami–Erofeev	A3	$[-\ln(1-\alpha)]^{1/2}$	53	9.66	0.973	88	17.15	0.999	49	8.76	0.951	49	8.58	0.990	41	6.36	0.942	58	10.25	0.979	65	11.81	0.977	48	8.72	0.896	215	44.77	0.993
Three-dimensional diffusion	D3	$1-(1-\alpha)^{1/3}$	210	43.11	0.966	340	69.49	0.998	197	39.95	0.946	197	39.68	0.985	167	31.95	<b>0.942</b>	228	45.28	0.973	255	50.65	0.971	191	39.46	0.895	797	166.62	0.993
Contracting sphere	CS	$1-(1-\alpha)^{1/3}$	100	19.48	0.963	166	32.86	0.997	94	17.86	0.941	94	17.73	0.983	79	13.76	0.935	109	20.57	0.970	123	23.29	0.969	91	17.61	0.886	394	81.83	0.993
Contracting cylinder	CC	$1-(1-\alpha)^{1/2}$	94	18.33	0.956	156	31.13	0.996	88	16.76	0.931	88	16.73	0.978	74	12.90	0.925	103	19.37	0.963	115	21.96	0.963	85	16.45	0.873	372	77.61	0.992

<sup>a</sup> Best fit models are in boldface.

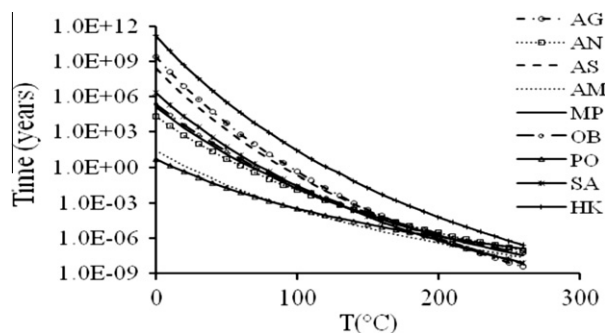


Fig. 4. Life time prediction of polysaccharides at different temperatures and 5% degree of conversions for polysaccharides.

(Fig. 4). The isocoverational method provides more accurate values of  $E_a$  and  $A$  than the single-heating rate method, therefore, we also report here relatively more reliable values of very useful activation parameters  $\Delta S^*$ ,  $\Delta H^*$  and  $\Delta G^*$  (Table 1).

#### 4. Conclusions

Thermal degradation of polysaccharides from MP, PO, AS, AN, PO husk and AM appeared to be a multistep process while those from AG, SA and OB followed single step kinetics. The degradation was exothermic in nature. Mean comprehensive index of thermal stability (ITS) ranged from 0.33–0.43. The SA and AS with ITS values 0.33 and 0.35, respectively, showed relatively lower stability than others due to higher moisture content. The ITS values of MP, PO, PO husk, AN, OB, AG and AM are comparable with some of the commercial polysaccharides like HPMC. Kinetic triplets consisting of apparent activation energy, pre-exponential factor and thermal degradation model, for the major decomposition step, were found to be 132–187 kJ mol<sup>-1</sup>, 31.3–43.8 and of first order respectively.

#### References

Ahmad, B., Khan, I., Azam, S., Bashir, S., Ahmad, J., & Hussain, F. (2011). Screening of *Acacia modesta* for haemagglutination, antibacterial, phytotoxic and insecticidal activities. *Journal of Medicinal Plants Research*, 5(14), 3090–3096.

Ahuja, M., Kumar, S., & Yadav, M. (2010). Evaluation of mimosa seed mucilage as bucoadhesive polymer. *Yakugaku Zasshi*, 130(7), 937–944.

Akbar, J., Iqbal, M. S., Chaudhary, M. T., Yasin, T., & Massey, S. (in press). A QSPR study of drug release from an arabinoxylan using ab initio optimization and neural networks. *Carbohydrate Polymers* <http://dx.doi.org/10.1016/j.carbpol.2012.02.016>.

Al-Yousuf, M. H., Bashir, A. K., Ali, B. H., Tanira, M. O. M., & Blunden, G. (2002). Some effects of *Salvia aegyptiaca* L. on the central nervous system in mice. *Journal of Ethnopharmacology*, 81(1), 121–127.

Azuma, J., & Sakamoto, M. (2003). Cellulosic hydrocolloid system present in seed of plants. *Trends in Glycoscience Glycotechnology*, 15(81), 1–14.

Chalk, R. C., Stoddart, J. F., Szarek, W. A., & Jones, J. K. N. (1968). Isolation of two arabinobioses from *Acacia nilotica* gum. *Canadian Journal of Chemistry*, 46(13), 2311–2313.

Chatterjee, A. K., & Mukherjee, S. (1958). The structure of tukhmalanga (*Salvia aegyptiaca*) mucilage. Part I. Nature of sugars present and the structure of the aldobioauronic acid. *Journal of the American Chemical Society*, 80(10), 2538–2540.

Doyle, C. D. (1961). Estimating thermal stability of experimental polymers by empirical thermogravimetric analysis. *Analytical Chemistry*, 33, 77–79.

Duke, J. A. (2002). *Handbook of medicinal herbs*. Boca Raton, USA: CRC Press LLC.

Farooqi, M. I. H., Kapoor, V. P., & Khan, P. S. H. (1977). Chemical investigation on the mucilage of lajwanti seeds from *Mimosa pudica* Linn. *Indian Drugs*, 15, 39.

Fischer, M. H., Yu, N., Gray, G. R., Ralph, J., Anderson, L., & Marlett, J. A. (2004). The gel-forming polysaccharide of psyllium husk (*Plantago ovata* Forsk). *Carbohydrate Research*, 339, 2009–2017.

Flynn, J. H., & Wall, L. A. (1966). General treatment of the thermogravimetry of polymers. *Journal of Research of the National Bureau of Standards-A. Physics and Chemistry*, 70A(6), 487–523.

Gorai, M., Gasmil, H., & Neffati, M. (2011). Factors influencing seed germination of medicinal plant *Salvia aegyptiaca* L. (Lamiaceae). *Saudi Journal of Biological Sciences*, 18(3), 255–260.

Hoffman, A. S. (2002). Hydrogels for biomedical applications. *Advanced Drug Delivery Reviews*, 54(1), 3–12.

Hosseini-Parvar, S. H., Matia-Merino, L., Goh, K. K. T., Razavi, S. M. A., & Mortazavi, S. A. (2010). Steady shear flow behavior of gum extracted from *Ocimum basilicum* L. seed: Effect of concentration and temperature. *Journal of Food Engineering*, 101(3), 236–243.

Iqbal, M. S., Akbar, J., Hussain, M. A., Saghir, S., & Sher, M. (2011). Evaluation of hot-water extracted arabinoxylans from ispaghula seeds as drug carriers. *Carbohydrate Polymers*, 83(3), 1218–1225.

Iqbal, M. S., Akbar, J., Saghir, S., Karim, A., Koschella, A., Heinze, T., et al. (2011). Thermal studies of plant carbohydrate polymer hydrogels. *Carbohydrate Polymers*, 86(4), 1775–1783.

Lee, K. Y., & Mooney, D. J. (2001). Hydrogels for tissue engineering. *Chemical Reviews*, 101(7), 1869–1880.

Lin, C., & Metters, A. T. (2006). Hydrogels in controlled release formulations: Network design and mathematical modeling. *Advanced Drug Delivery Reviews*, 58(12–13), 1379–1408.

Morton, J. F. (1990). Mucilaginous plants and their uses in medicine. *Journal of Ethnopharmacology*, 29(3), 245–266.

Munarin, F., Petrini, P., Farè, S., & Tanzi, M. (2010). Structural properties of polysaccharide-based microcapsules for soft tissue regeneration. *Journal of Materials Science: Materials in Medicine*, 21(1), 365–375.

Niño-Medina, G., Carvajal-Millán, E., Rascón-Chu, A., Márquez-Escalante, J. A., Guerrero, V., & Salas-Muñoz, E. (2010). Feruloylated arabinoxylans and arabinoxylan gels: Structure, sources and applications. *Phytochemistry Reviews*, 9, 111–120.

Ozawa, T. (1965). A new method of analyzing thermogravimetric data. *Bulletin of the Chemical Society of Japan*, 38(11), 1881–1886.

Peng, Y., & Wu, S. (2010). The structural and thermal characteristics of wheat straw hemicellulose. *Journal of Analytical and Applied Pyrolysis*, 88(2), 134–139.

Peppas, N. A., Bures, P., Leobandung, W., & Ichikawa, H. (2000). Hydrogels in pharmaceutical formulations. *European Journal of Pharmaceutics and Biopharmaceutics*, 50(1), 27–46.

Popescu, M.-C., Popescu, C.-M., Lisa, G., & Sakata, Y. (2011). Evaluation of morphological and chemical aspects of different wood species by spectroscopy and thermal methods. *Journal of Molecular Structure*, 988(1–3), 65–72.

Saghir, S., Iqbal, M. S., Hussain, M. A., Koschella, A., & Heinze, T. (2008). Structural characterization and carboxymethylation of arabinoxylan isolated from ispaghula (*Plantago ovata*) seed husk. *Carbohydrate Polymers*, 74, 309–317.

Seigler, D. S. (2003). Phytochemistry of *Acacia-sensu lato*. *Biochemical Systematics and Ecology*, 31(8), 845–873.

Singh, K., Kumar, A., Langyan, N., & Ahuja, M. (2009). Evaluation of *Mimosa pudica* seed mucilage as sustained-release excipient. *AAPS PharmSciTech*, 10(4), 1121–1127.

Singh, P. K., Kumar, V., Tiwari, R. K., Sharma, A., Rao, C. V., & Singh, R. H. (2010). Medico-ethnobotany of 'Chatara' block of district Sonbhadra, Uttar Pradesh India. *Advances in Biological Research*, 4(1), 65–80.

Tharanathan, R. N., & Anjaneyalu, Y. V. (1972). Polysaccharides from the seed mucilage of *Ocimum basilicum* Linn. *Current Science*, 41, 214.

Tharanathan, R. N., & Anjaneyalu, Y. V. (1975). Structure of the acid-stable core-polysaccharide derived from the seed mucilage of *Ocimum basilicum*. *Australian Journal of Chemistry*, 28(6), 1345–1350.

Tischer, C. A., Iacomini, M., & Gorin, P. A. J. (2002). Structure of the arabinogalactan from gum tragacanth (*Astragalus gummifer*). *Carbohydrate Research*, 337(18), 1647–1655.

Vyazovkin, S. (2006). Model-free kinetics. Staying free of multiplying entities without necessity. *Journal of Thermal Analysis and Calorimetry*, 83(1), 45–51.

Vyazovkin, S., Burnham, A. K., Criado, J. M., Pérez-Maqueda, L. A., Popescu, C., & Sbirrazzuoli, N. (2011). ICTAC Kinetics Committee recommendations for performing kinetic computations on thermal analysis data. *Thermochemical Acta*, 520(1–2), 1–19.

Yang, H., Yan, R., Chen, H., Lee, D. H., & Zheng, C. (2007). Characteristics of hemicellulose, cellulose and lignin pyrolysis. *Fuel*, 86(12–13), 1781–1788.

Zohuriaan, M. J., & Shokrolahi, F. (2004). Thermal studies on natural and modified gums. *Polymer Testing*, 23, 575–579.